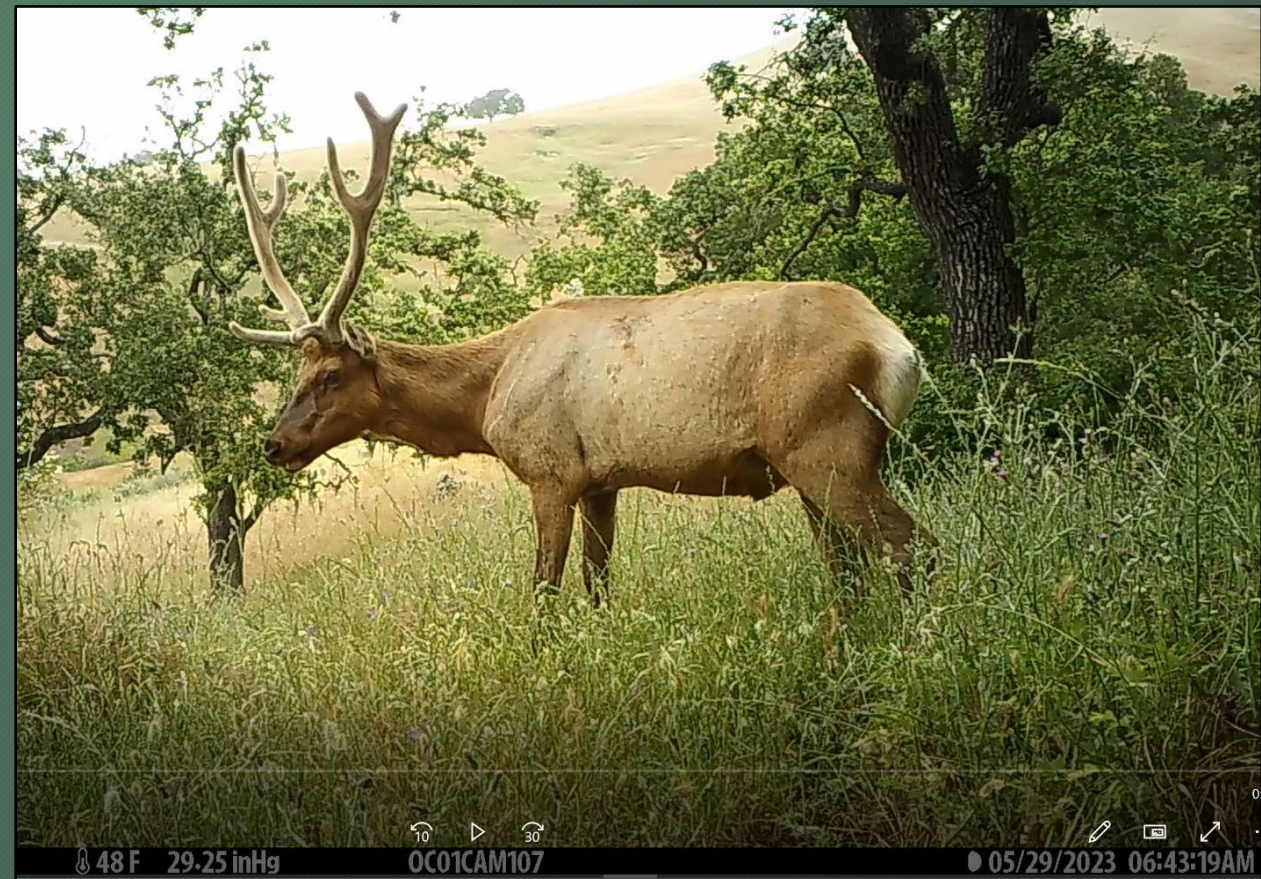
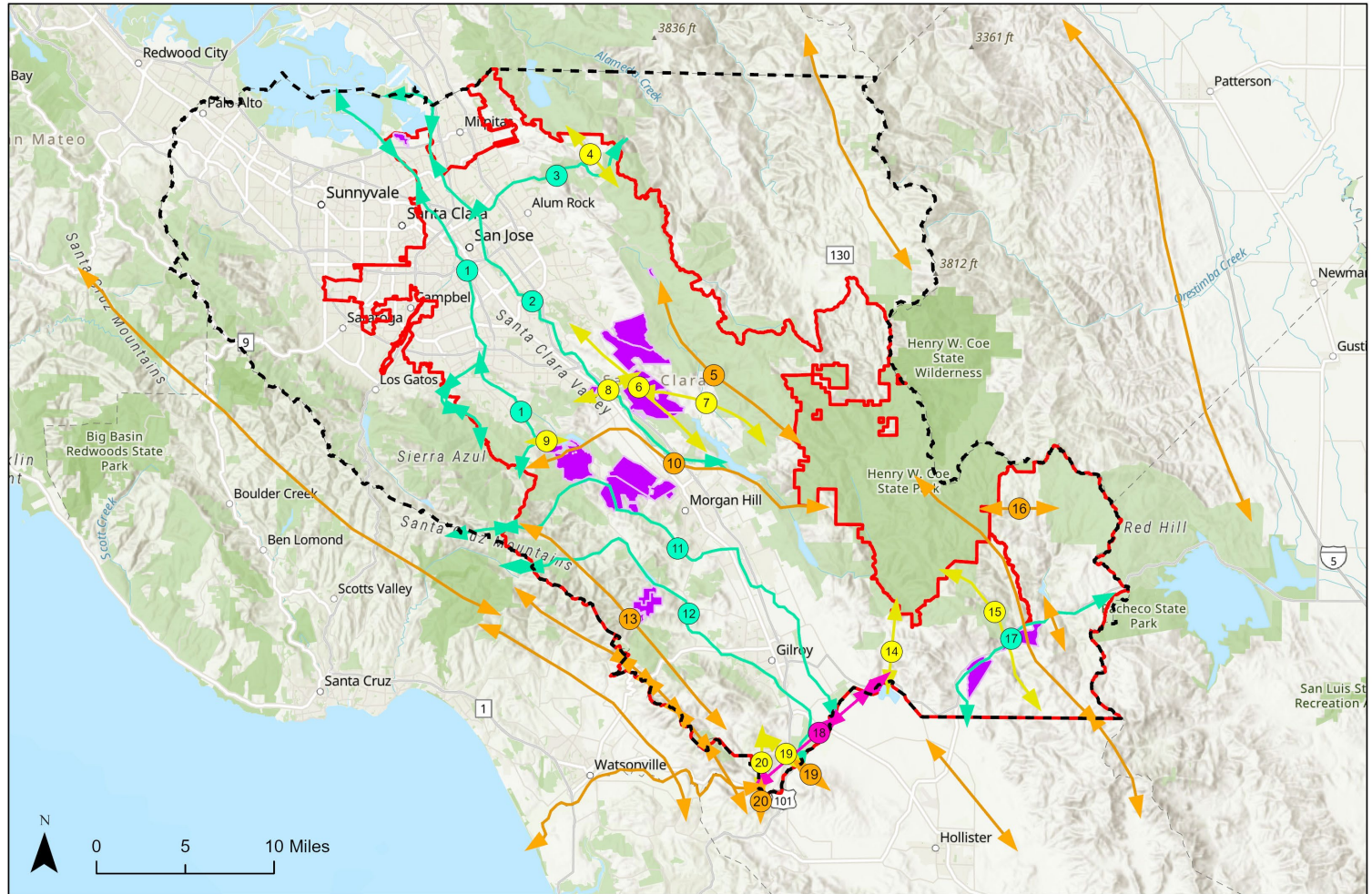


State Route-152 Pacheco Pass: Working Together for the Benefit of Wildlife

Edmund Sullivan & Julie King - Santa Clara Valley Habitat Agency





Santa Clara Valley Habitat Plan Area Regional Context

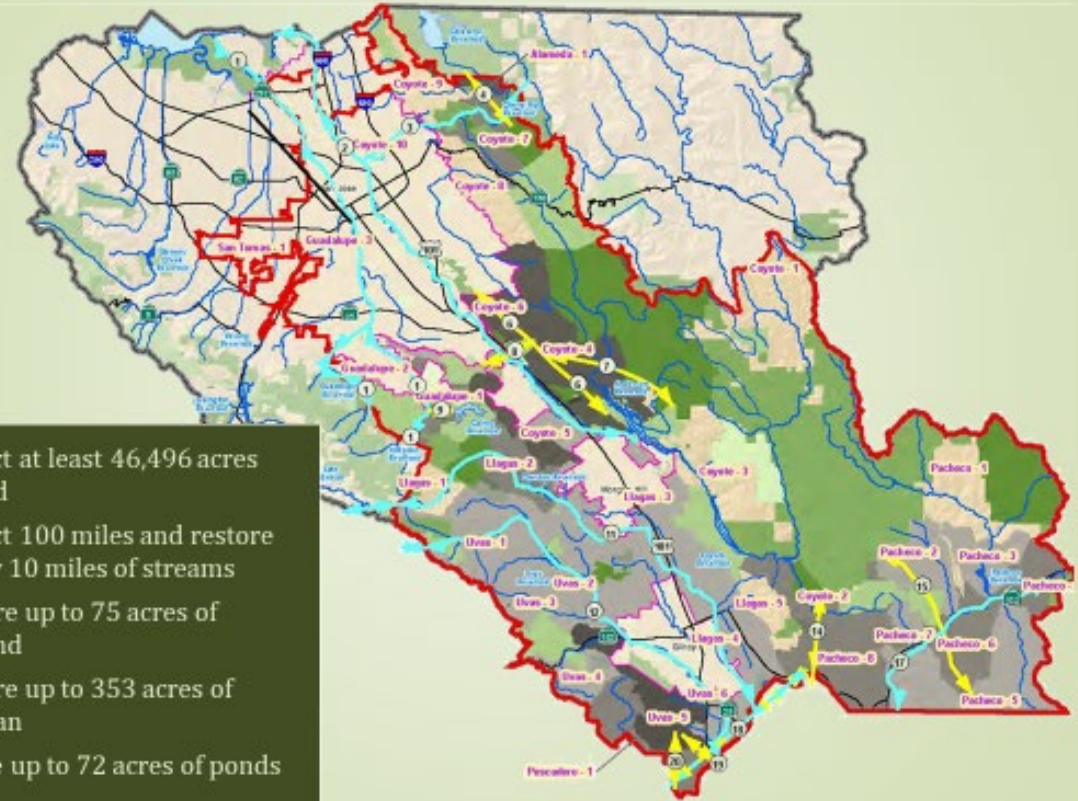
- Habitat Plan Permit Area
- SCVHA Reserves & Pending Acquisitions (+/- 18,100 acres)
- County Boundary (Area)
- Protected Lands and Open Space Overlay
- Linkage Type**
- ↔ Primarily Aquatic/Riparian Linkage
- ↔ Primarily Terrestrial Linkage
- ↔ Other
- ↔ Primarily Terrestrial and Aquatic/Riparian Linkage

How we got
here



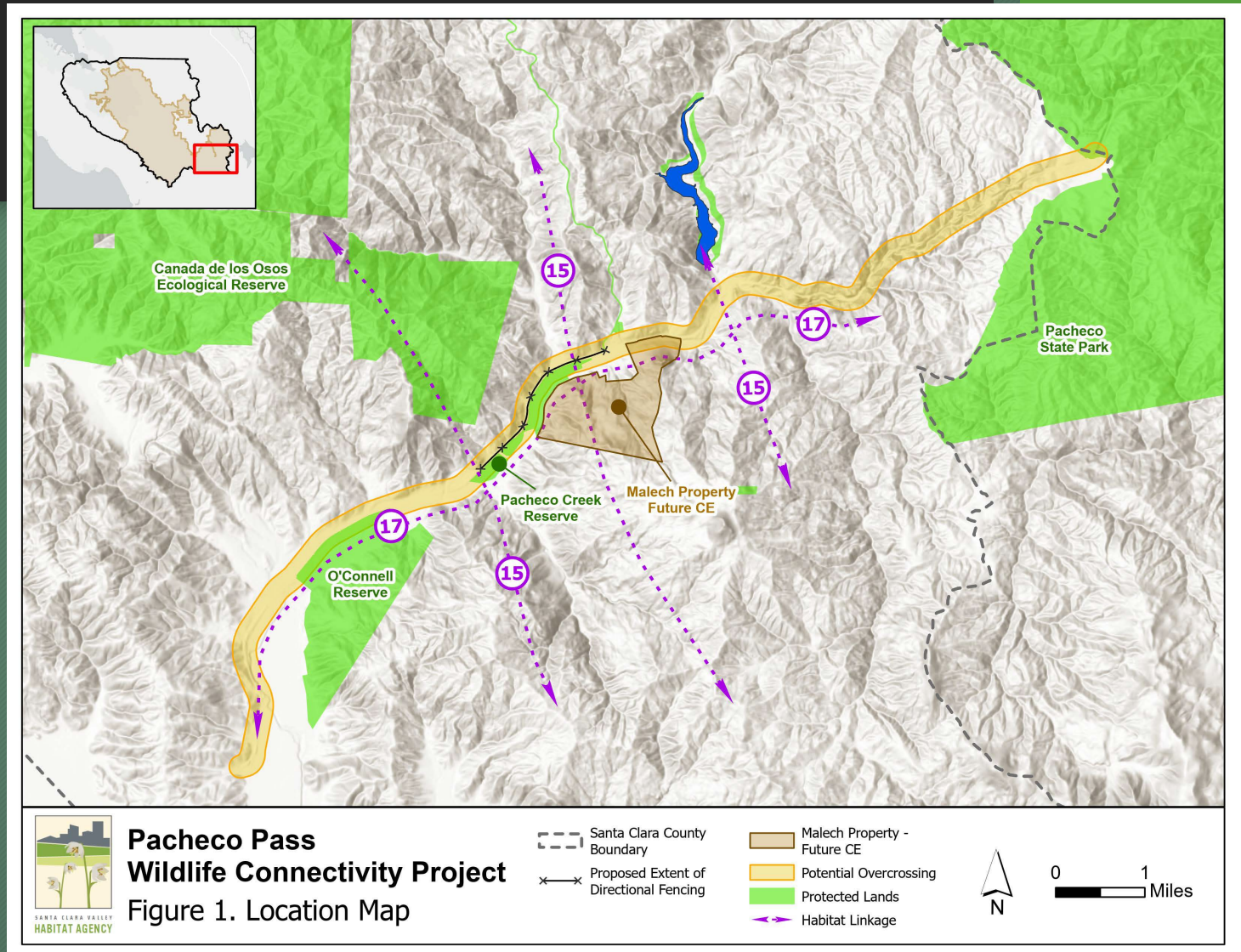
How Pacheco fits into the Conservation Strategy

Conservation Strategy



- Protect at least 46,496 acres of land
- Protect 100 miles and restore nearly 10 miles of streams
- Restore up to 75 acres of wetland
- Restore up to 353 acres of riparian
- Create up to 72 acres of ponds

A Closer Look: SR-152 and Habitat Plan Assumptions



The Collaborate Approach



Building support among transportation focused organizations to integrate wildlife connectivity improvements into project design.



Working with wildlife advocates within these organizations.



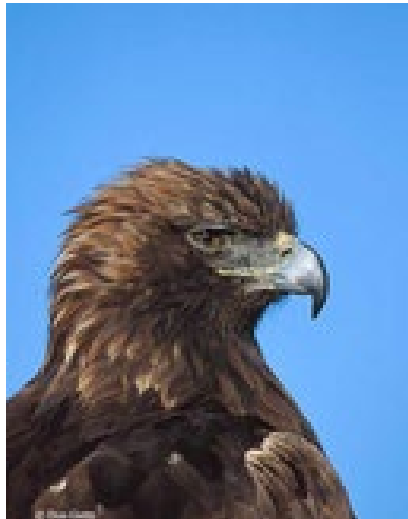
Advocating for the High-Speed Rail Authority to mitigate their project's impact in Santa Clara County.

Building the Case: Why Pacheco Pass SR-152?

- SR-152 Pacheco Pass identified as an important linkage within the Santa Clara Valley Habitat Conservation Plan.
- State and local planning documents such as the Bay Area Critical Linkages study have targeted this corridor as a top priority.
- Biodiversity hot spot.
- Monitoring data supports SR-152 Pacheco Pass as an important wildlife linkage.
- Pacheco Pass is a critical connection facilitating genetic flow between northern, southern and eastern populations of target species.
- SR-152 is the only highway in the SF Bay Area where gray fox, mountain lions, badgers, and tule elk are crossing and dying on the same highway.

The Winning Formula


- Build the case: data is key.
- Support from elected leaders: this is a bi-partisan win-win issue.
- Without transportation agency engagement you are roadkill.
- Public safety angle.
- Multi-stakeholder approach is a must.
- NGO and government funding follows the above, without which you have no project just dreams.








Bushnell

 PCRsite20

18 °F -7 °C ●

02





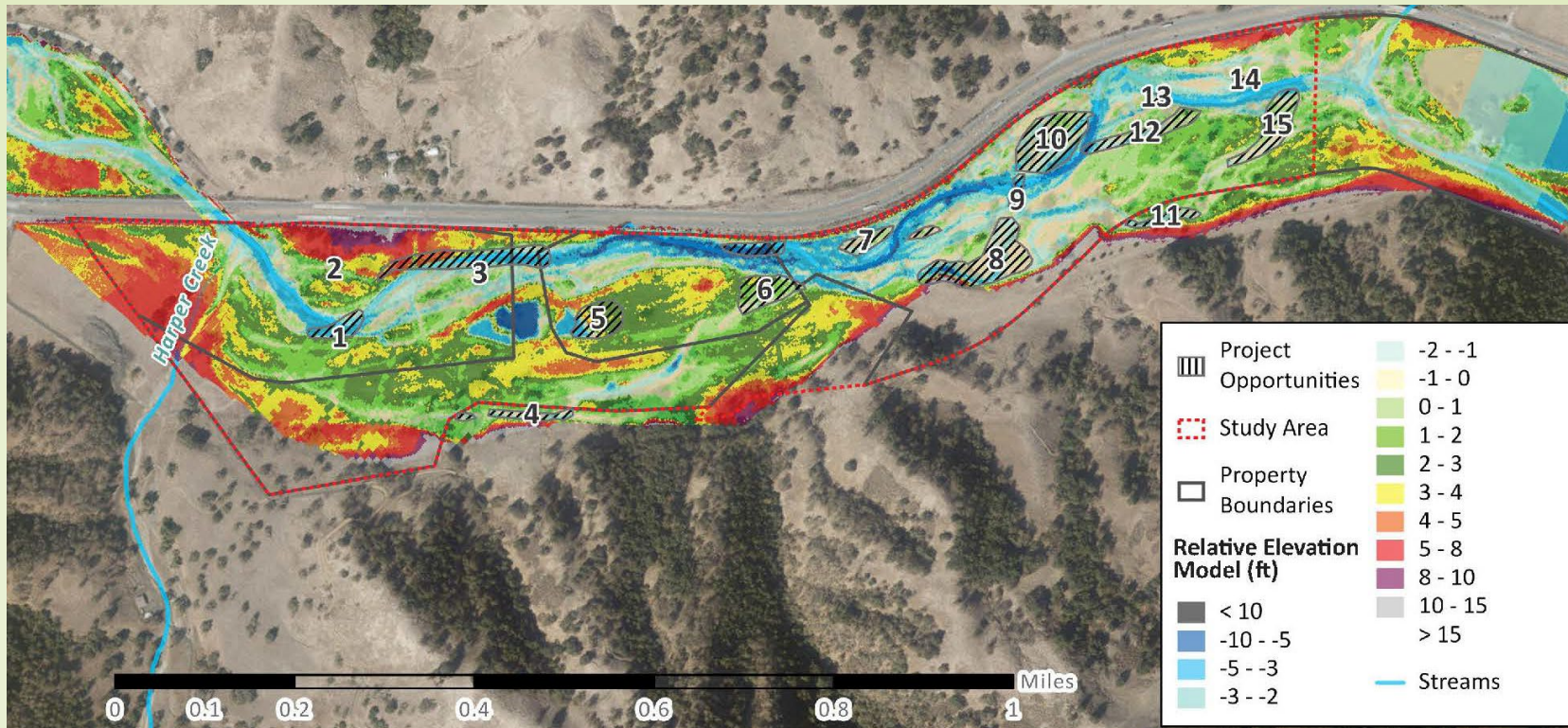




Solutions

Pacheco Creek
Stream and
Riparian
Restoration
Project:
Construction 2023





- ▶ Gravel mining operation led to scouring and erosion along Pacheco Creek
- ▶ Rare sycamore alluvial woodland land cover type is present
- ▶ Feasibility study to understand hydrologic, geomorphic and biological processes
- ▶ Primary design features
 - 10 acres sycamore alluvial woodland restoration
 - 47 acres riparian enhancement & restoration
 - 7,600 ft. stream restoration and enhancement; in-stream and floodplain connectivity
 - Freshwater marsh and seasonal wetland restoration & creation

Habitat Restoration

- Completed: 2 acres
- Planned: 140 acres, 3.85 miles
- Funded: Construction Phase
- Funding Partners: CDFW, WCB, Valley Water
- Schedule:
 - July 2023 construction kick-off
 - July-Sept 2023 channel grading/PALS structures/fencing
 - Sept-Oct 2023 seeding
 - Nov-Jan 2023 planting & willow cuttings







Low-hanging Fruit

- Creating paths over the top of bridge rip-rap.
- Cleaning out culverts.
- Wildlife directional fencing.



Pacheco Creek Bridge Rip-Rap Path Creation



Wildlife Using the Rip-Rap Path



Clearing Culverts



2021



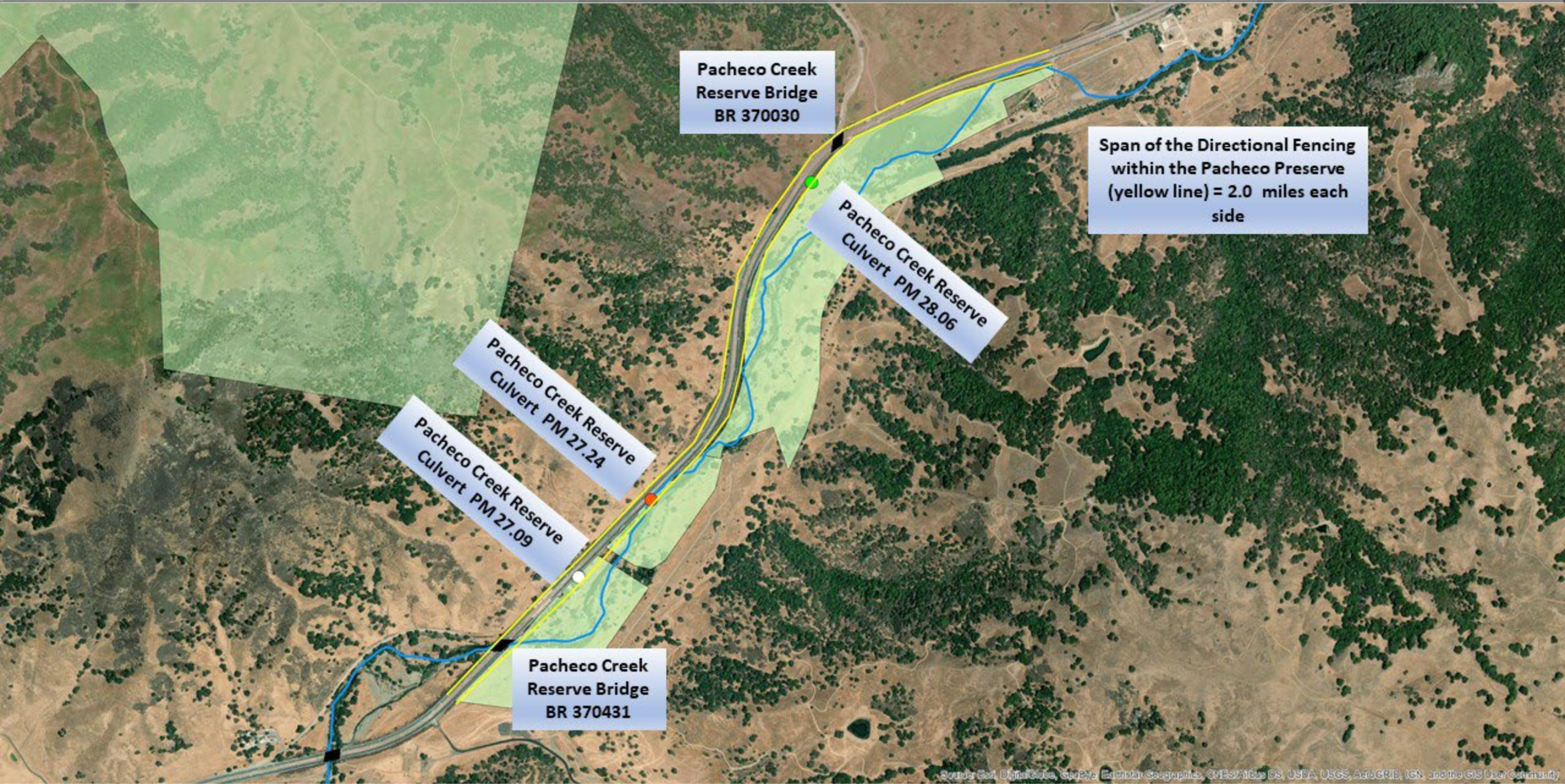
2023



Directional fencing – not sexy but critical

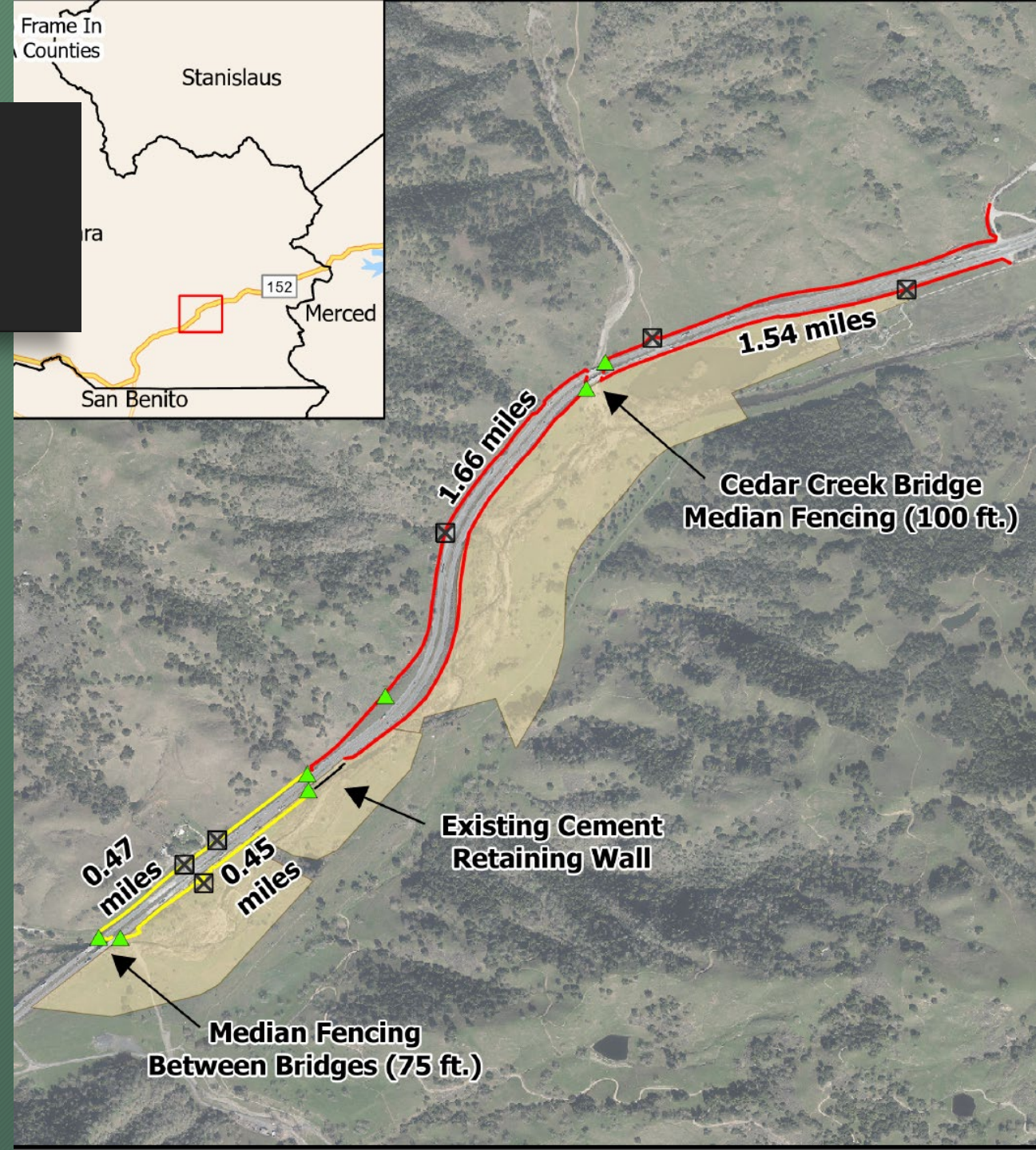
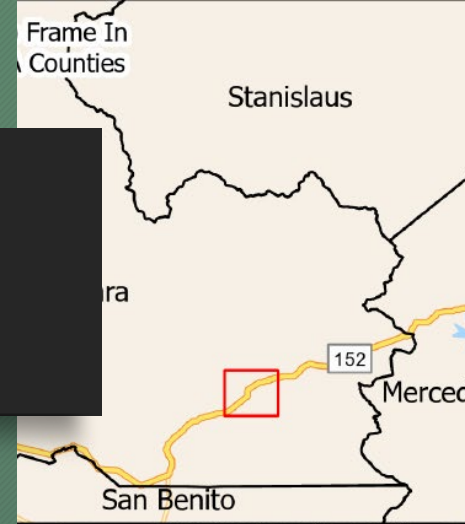


Directional fencing to bridges and culverts that have documented wildlife use at the Pacheco Reserve.



Wildlife Directional Fencing

- Goal: ~ 2 Highway miles
- Funded: Construction Phase (0.5 HW miles)
- Funding partners: WCB, WCN, Moore
- Future funding: \$5.5M FHWA WWPP grant submitted in partnership with VTA for remaining length
- Schedule
 - 2023: Design and Encroachment Permit
 - 2024: Construction
 - 2025: Monitoring

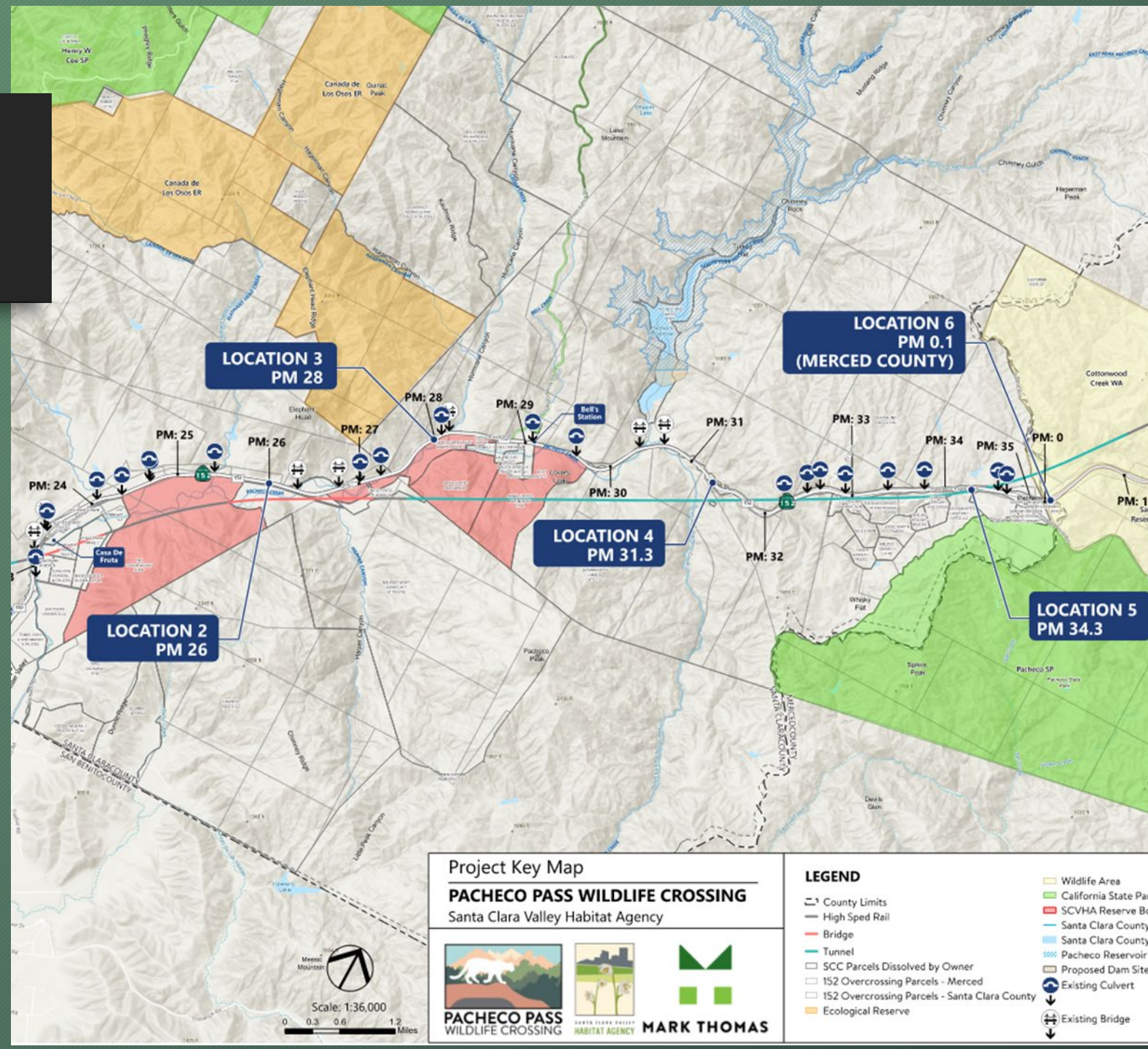


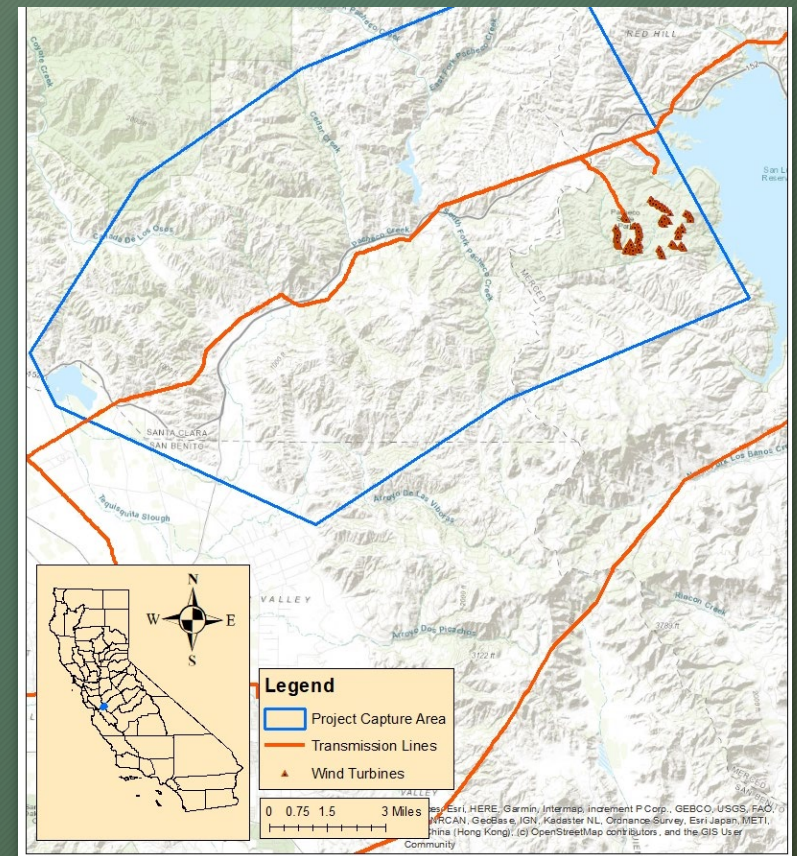
Directional Fencing & Jump-Outs Along SR-241



Pacheco Pass Wildlife Overpass

- Goal: 1 structure
- Funded: Planning Phase
- Funding Partners: WCB, WCN, Moore
- Schedule
 - 2023: Draft AA and PID
 - 2024: Draft 35% & ED
 - 2025: Draft 65% & Draft Final ED
 - 2026: Final PID, 65%, and ED





Mt. Lion & Elk Telemetry Studies

UC Davis & CDFW collaborations

Land Acquisition in Pacheco Watershed

- Protected to date: 2,053 acres
- Funding Partners: USFWS, WCB, WCN, Moore, TCF, plus Caltrans donation
- Developing partnerships with the Pacheco Pass ranching community



The "Big Picture"

- Multiple wildlife overpasses and/or underpasses for SR-152 corridor from Soap Lake to Los Banos.
- Establish sustainable funding mechanisms for wildlife crossing enhancements built into transportation project budgets, bond grant programs, or legislation such as SB-790.
- Funding for protecting land within the Pacheco Pass Wildlife Linkage corridor.
- Recognizing NCCPs as an appropriate mechanism for implementing biodiversity protection via 30 x 30.



Challenges



Funding: will it be sustainable?



High-Speed Rail and Pacheco Dam



On-going maintenance of culverts and directional fencing

Questions?

