



POST

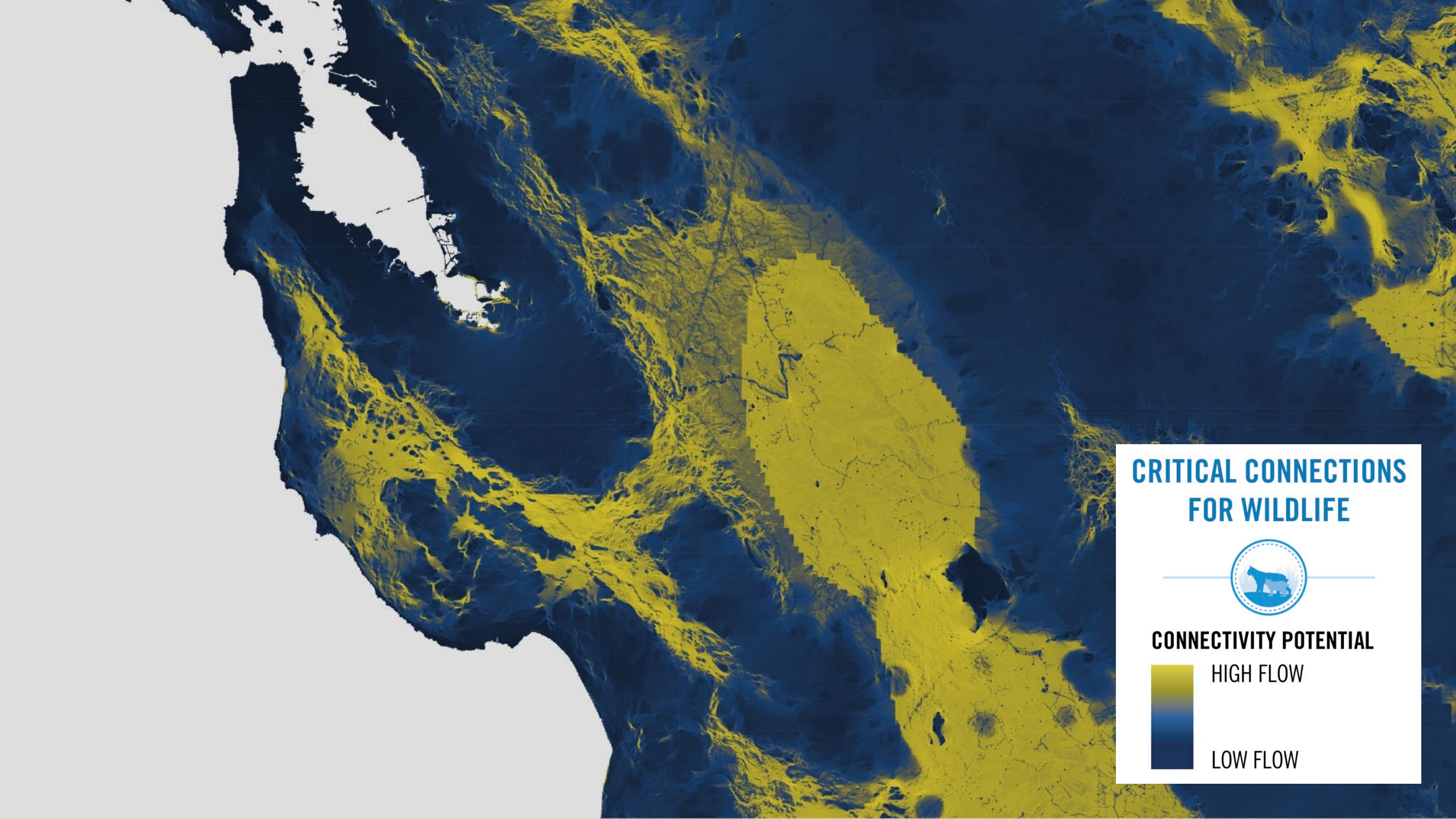


RESTORING WILDLIFE CONNECTIVITY IN COYOTE VALLEY

Marian Vernon
Wildlife Linkages Program Manager
Peninsula Open Space Trust
mvernon@openspacetrust.org

August 22, 2023

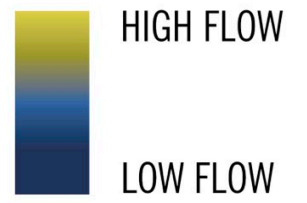


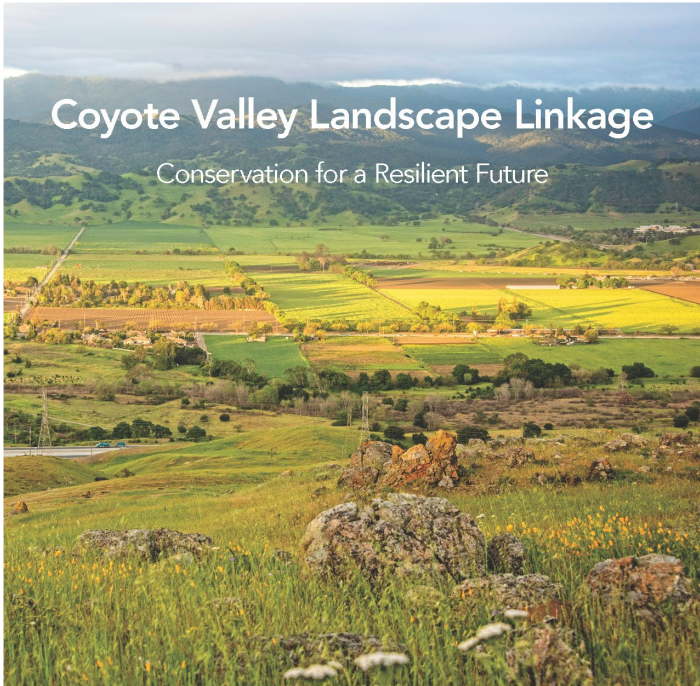


CRITICAL CONNECTIONS FOR WILDLIFE



CONNECTIVITY POTENTIAL



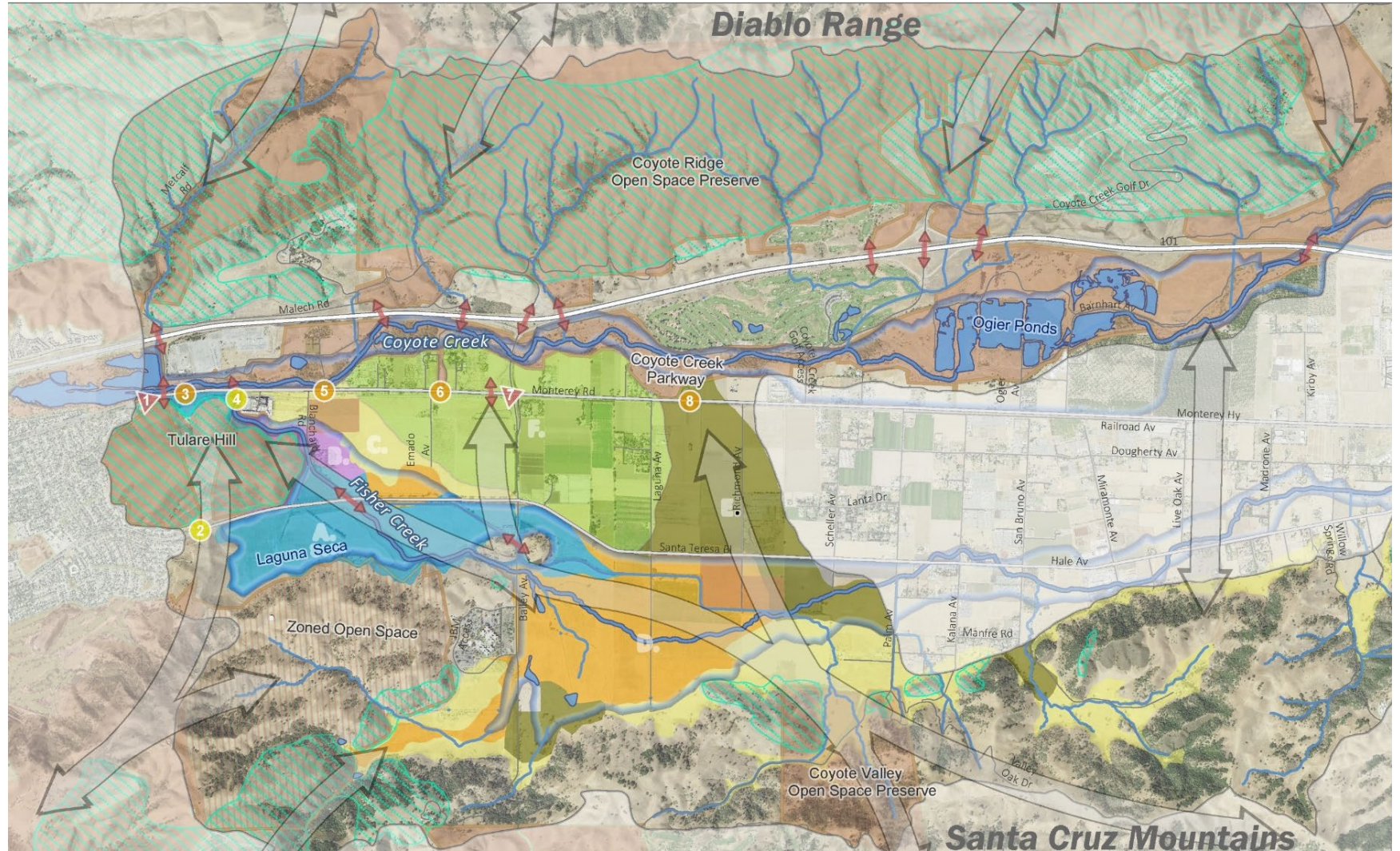


Coyote Valley Landscape Linkage

Conservation for a Resilient Future



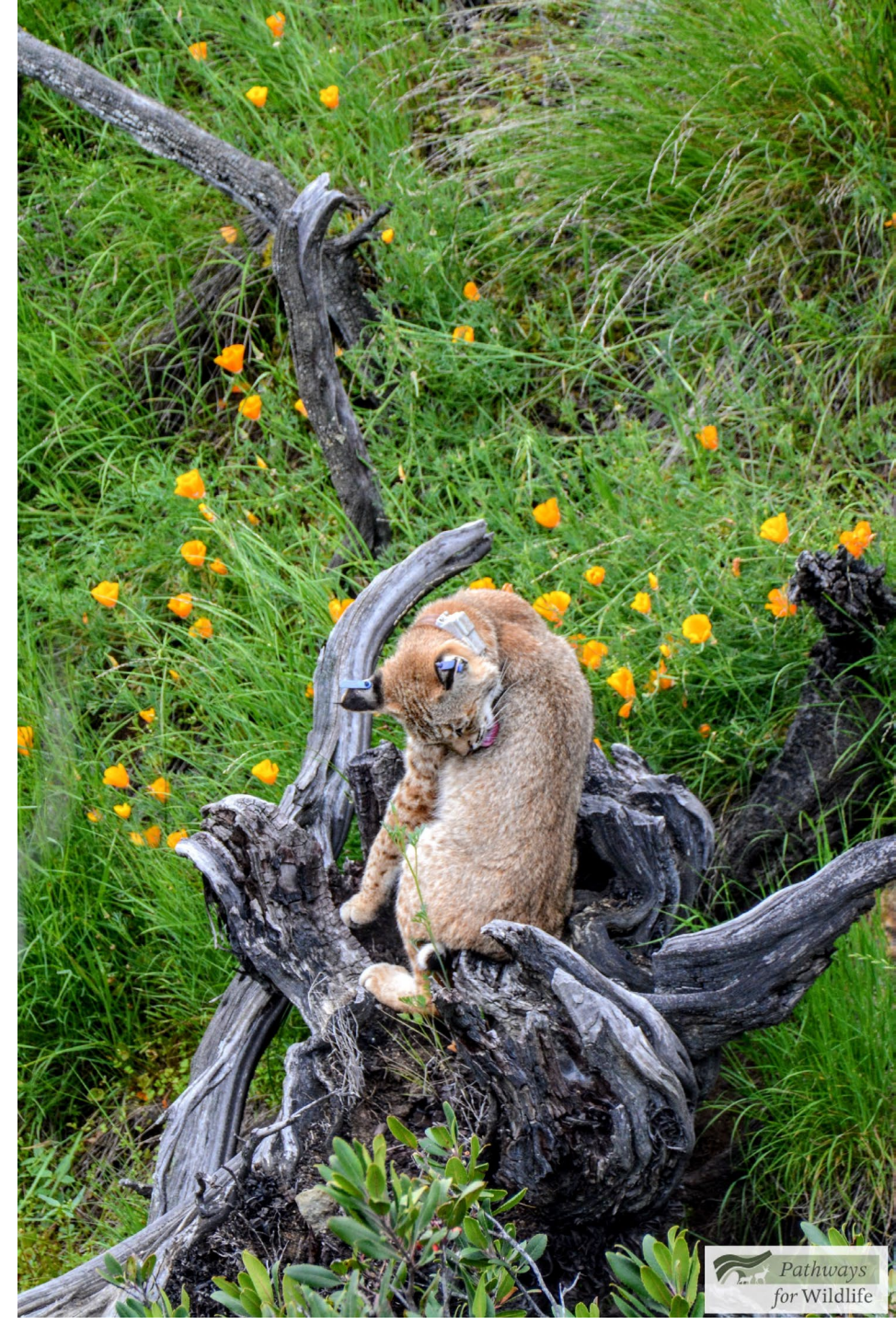
2017 Coyote Valley Landscape Linkage Report



- General Wildlife Pathways
- Documented Wildlife Pathways
- Protected Lands
- Enhanced Culvert
- New Culvert
- New Overpass
- Oak Savanna
- Oak Woodland / Orchard
- Wildlife Friendly Agriculture
- Willow Grove
- Freshwater Wetland
- Wet Meadow
- Restored Floodplain
- Serpentine

Scientific Studies

- Road Ecology Study (2023)
- Puma Habitat Selection and Connectivity Study (2021)
- Reptile and Amphibian Linkage Study (2020)
- Bobcat Habitat Preference and Connectivity Study (2019)
- Landscape Linkage Report (2017)



Coyote Valley:

2023: The Conserved Landscape Today



SANTA CRUZ MOUNTAINS

SAN JOSE
ALMADEN VALLEY

Calero County Park

Santa Teresa County Park

Tilton Ranch

Coyote Valley Open Space Preserve

Mid-Coyote Valley Conservation Area

North Coyote Valley Conservation Area

FISHER CREEK

SPRECKLES HILL

FISHER CREEK

LAGUNA SECA

SAN JOSE

Tulare Hill

Santa Teresa Blvd.

Laguna Ave.

Bailey Ave.

City of Morgan Hill
~1.5 miles

COYOTE VALLEY
Monterey Road & Rail Corridor

Coyote Creek Parkway

COYOTE CREEK

US101

Coyote Ridge Open Space Preserve

Coyote Creek Parkway

COYOTE CREEK

DIABLO RANGE



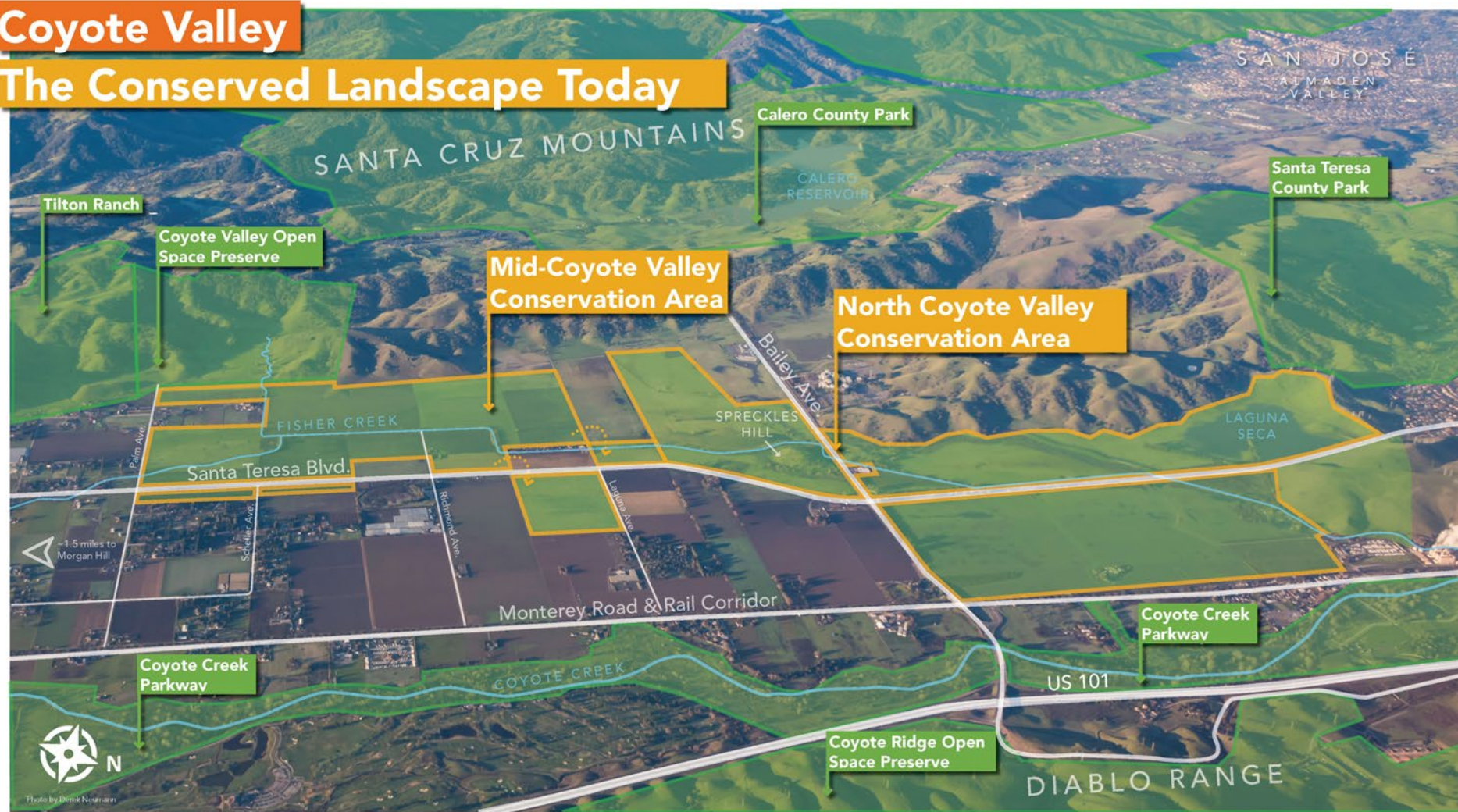
COYOTE VALLEY

CONSERVATION AREAS MASTER PLAN

- Approx. 3–4-year science and community-based planning process, followed by environmental review
- Master plan will ID early implementation projects to be constructed within next 5-10 years
- Larger programmatic vision for 20-to-30-year time horizon
- On-going early restoration/demonstration projects

Coyote Valley

The Conserved Landscape Today



Map Key

- Coyote Valley Conservation Areas
- Other Public Open Space



Enhance Wildlife Habitat & Ecological Connectivity



Sustainably Manage & Restore Water Resources



Improve Public Health via Access to Nature



Foster On-Going and Inclusive Community Engagement



Respect, Honor, Preserve, and Interpret Cultural Heritage & Historic Resources



Adapt to Changing Climate Conditions



Support Local Agriculture



Leverage Unique Landscape Features to Boost the Local Economy



Promote Equitable and Sustainable Transportation



Consider a Holistic Vision for the Entire Coyote Valley

Wildlife Habitat and Connectivity Objectives

- Create and restore habitat corridors
- Improve or create wildlife crossings
- Support healthy populations and gene flow
- Create habitat mosaic to support biodiversity



The Triple Barrier Problem



Monterey Road + Rail Corridor

US 101





 Hwy101Culv10 42F5°C 

01-02-2017 08:50:14

Coyote Valley Wildlife Crossings Planning

Enhance ecological connectivity by reestablishing safe movement corridors for species threatened by habitat fragmentation and transportation infrastructure



Coyote Valley Wildlife Connectivity Planning Project (2023-2026)



- Conduct feasibility assessments for both barriers
- Identify wildlife crossings and other permeability enhancements
- Advance designs, environmental review, and permitting for up to 4 structures



Map date: 2/27/2021
Sources: ESRI, POST, CPAD, Santa Clara County



Coyote Valley Wildlife Connectivity Planning Project (2023-2026)



Project Challenges: Wildlife Crossings

- Partner coordination
- Site control
- Focal species
- Long-term obligations
- Funding



Project Challenges: Linkage Planning

- Balancing multiple goals
- Development pressure
- Narrow linkage
- Multiple road barriers





POST

Thank You.
Questions?

mvernon@openspacetrust.org

Photo by Derek Neumann