

## Section A. Photodocumentation

---



**Photo 1. Establishment of Photo Monitoring Point CR1\_PPT1 (August 12, 2019)**



**Photo 2. Year 1 Conditions at Photo Monitoring Point CR1\_PPT1 (January 28, 2020)**



**Photo 3. Year 2 Conditions at Photo Monitoring Point CR1\_PPT1 (April 8, 2021)**



**Photo 4. Year 3 Conditions at Photo Monitoring Point CR1\_PPT1 (March 3, 2022)**



**Photo 5. Year 4 Conditions at Photo Monitoring Point CR1\_PPT1 (January 30, 2023)**



**Photo 6. Year 5 Conditions at Photo Monitoring Point CR1\_PPT1 (September 5, 2024)**



**Photo 7. Establishment of Photo Monitoring Point CR1\_PPT2\_1 (August 12, 2019)**



**Photo 8. Year 1 Conditions at Photo Monitoring Point CR1\_PPT2\_1 (January 28, 2020)**



**Photo 9. Year 2 Conditions at Photo Monitoring Point CR1\_PPT2\_1 (April 8, 2021)**



**Photo 10. Year 3 Conditions at Photo Monitoring Point CR1\_PPT2\_1 (March 3, 2022)**



**Photo 11. Year 4 Conditions at Photo Monitoring Point CR1\_PPT2\_1 (January 30, 2023)**



**Photo 12. Year 5 Conditions at Photo Monitoring Point CR1\_PPT2\_1 (September 5, 2024)**



**Photo 13. Establishment of Photo Monitoring Point CR1\_PPT2\_2 (August 12, 2019)**



**Photo 14. Year 1 Conditions at Photo Monitoring Point CR1\_PPT2\_2 (January 28, 2020)**



**Photo 15. Year 2 Conditions at Photo Monitoring Point CR1\_PPT2\_2 (April 8, 2021)**



**Photo 16. Year 3 Conditions at Photo Monitoring Point CR1\_PPT2\_2 (March 3, 2022)**



**Photo 17. Year 4 Conditions at Photo Monitoring Point CR1\_PPT2\_2 (January 30, 2023)**



**Photo 18. Year 5 Conditions at Photo Monitoring Point CR1\_PPT2\_2 (September 5, 2024)**



**Photo 19. Establishment of Photo Monitoring Point CR1\_PPT2\_3 (August 12, 2019)**



**Photo 20. Year 1 Conditions at Photo Monitoring Point CR1\_PPT2\_3 (January 28, 2020)**



**Photo 21. Year 2 Conditions at Photo Monitoring Point CR1\_PPT2\_3 (April 8, 2021)**



**Photo 22. Year 3 Conditions at Photo Monitoring Point CR1\_PPT2\_3 (September 27, 2022)**



**Photo 23. Year 4 Conditions at Photo Monitoring Point CR1\_PPT2\_3 (January 30, 2023)**



**Photo 24. Year 5 Conditions at Photo Monitoring Point CR1\_PPT2\_3 (September 5, 2024)**



**Photo 25. Establishment of Photo Monitoring Point CR1\_PPT3\_1 (August 12, 2019)**



**Photo 26. Year 1 Conditions at Photo Monitoring Point CR1\_PPT3\_1 (January 28, 2020)**



**Photo 27. Year 2 Conditions at Photo Monitoring Point CR1\_PPT3\_1 (April 8, 2021)**



**Photo 28. Year 3 Conditions at Photo Monitoring Point CR1\_PPT3\_1 (March 3, 2022)**



**Photo 29. Year 4 Conditions at Photo Monitoring Point CR1\_PPT3\_1 (January 30, 2023)**



**Photo 30. Year 5 Conditions at Photo Monitoring Point CR1\_PPT3\_1 (September 5, 2024)**



**Photo 31. Establishment of Photo Monitoring Point CR1\_PPT3\_2 (August 12, 2019)**



**Photo 32. Year 1 Conditions at Photo Monitoring Point CR1\_PPT3\_2 (January 28, 2020)**



**Photo 33. Year 2 Conditions at Photo Monitoring Point CR1\_PPT3\_2 (April 8, 2021)**



**Photo 34. Year 3 Conditions at Photo Monitoring Point CR1\_PPT3\_2 (March 3, 2022)**



**Photo 35. Year 4 Conditions at Photo Monitoring Point CR1\_PPT3\_2 (January 30, 2023)**



**Photo 36. Year 5 Conditions at Photo Monitoring Point CR1\_PPT3\_2 (September 5, 2024)**



**Photo 37. Establishment of Photo Monitoring Point CR1\_PPT3\_3 (August 12, 2019)**



**Photo 38. Year 1 Conditions at Photo Monitoring Point CR1\_PPT3\_3 (January 28, 2020)**



**Photo 39. Year 2 Conditions at Photo Monitoring Point CR1\_PPT3\_3 (April 8, 2021)**



**Photo 40. Year 3 Conditions at Photo Monitoring Point CR1\_PPT3\_3 (September 27, 2022)**



**Photo 41. Year 4 Conditions at Photo Monitoring Point CR1\_PPT3\_3 (January 30, 2023)**



**Photo 42. Year 5 Conditions at Photo Monitoring Point CR1\_PPT3\_3 (September 5, 2024)**



**Photo 43. Establishment of Photo Monitoring Point CR1\_PPT3\_3 (August 12, 2019)**



**Photo 44. Year 1 Conditions at Photo Monitoring Point CR4\_PPT1 (January 28, 2020)**



**Photo 45. Year 2 Conditions at Photo Monitoring Point CR4\_PPT1 (April 8, 2021)**



**Photo 46. Year 3 Conditions at Photo Monitoring Point CR4\_PPT1 (March 3, 2022)**



**Photo 47. Year 4 Conditions at Photo Monitoring Point CR4\_PPT1 (January 30, 2023)**



**Photo 48. Year 5 Conditions at Photo Monitoring Point CR4\_PPT1 (September 5, 2024)**



**Photo 49. Establishment of Photo Monitoring Point CR4\_PPT2 (August 12, 2019)**



**Photo 50. Year 1 Conditions at Photo Monitoring Point CR4\_PPT2 (January 28, 2020)**



**Photo 51. Year 2 Conditions at Photo Monitoring Point CR4\_PPT2 (April 8, 2021)**



**Photo 52. Year 3 Conditions at Photo Monitoring Point CR4\_PPT2 (March 3, 2022)**



**Photo 53. Year 4 Conditions at Photo Monitoring Point CR4\_PPT2 (January 30, 2023)**



**Photo 54. Year 5 Conditions at Photo Monitoring Point CR4\_PPT2 (September 5, 2024)**

## Section B. Hydrologic Regime Monitoring

---



**Photo 55. Completely Dry Pond Bed at CR1 (December 29, 2020)**



**Photo 56. Completely Dry Pond Bed at CR1 (February 1, 2021)**



**Photo 57. 4.6 feet of water at CR1 (January 14, 2022)**



**Photo 58. Completely Dry Pond Bed at CR1 (March 3, 2022)**



**Photo 59. CR1 at water level completely dry by May 30 (June 16, 2022)**



**Photo 60. CR1 filled and flowing into overflow pipes with >12-inches of rainfall in November – January (January 30, 2023)**



**Photo 61. 5.7 ft of water (April 19, 2023), but pond water levels steadily decreased to 0 ft by the end of May**



**Photo 62. Completely Dry Pond Bed (August 8, 2023)**



**Photo 63. Completely Dry Pond Bed (November 2, 2023)**



**Photo 64. Pond is almost dry (May, 2024)**



**Photo 65. Pond is completely dry (June 2024)**



**Photo 66. Completely Dry Pond Bed (September 5, 2024)**



**Photo 67. Completely Dry Pond Bed (November 2, 2024)**



**Photo 67. Completely Dry Pond Bed at CR4 (December 29, 2020)**



**Photo 68. One (1) foot of water at CR4 (February 1, 2021)**



**Photo 69. No water at CR4 due to open drain valve (photo provided by SCVHA, February 10, 2021)**



**Photo 70. Removable caps, added to the quick drain pipes to prevent leakage (photo provided by SCVHA, November 30, 2021)**



**Photo 71. 3-ft of water at CR4 (January 14, 2022)**



**Photo 72. 2.1-ft of water at CR4 (March 3, 2022)**



**Photo 73. Completely Dry Pond Bed at CR1 (June 16, 2022)**



**Photo 74. Pond filled with >12-inches of rainfall in November – January (January 30, 2023)**



**Photo 75. Pond remains filled with 4.9 ft of water (April 19, 2023)**



**Photo 76. Pond did not dry during the summer and retained 3.1 ft of water (November 2, 2023)**



**Photo 77. Pond did not dry during the summer and retained 5.5 ft of water (May 2024)**



**Photo 78. Pond did not dry during the summer and retained 5.3 ft of water (June 2024)**



**Photo 79. Pond did not dry during summer months and retained 2.8 ft of water (September 5, 2024)**



**Photo 80. Pond did not dry during summer months and retained 1.3 ft of water (November 2, 2024)**

## Section C. Wetland Vegetation

---



**CR1 Wetland Transect within Cattle Exclosure, April 2024**



**1m<sup>2</sup> Quadrat, CR1, April 2024**



**Vegetation within CR1, April 2024**



**CR1 Wetland, Showing Grazed and Un-grazed Areas, April 2024**



**CR4 Open Water with Wetland Vegetation, April 2024**



**CR4 Open Water with Wetland Vegetation, April 2024**



**CR-4 1m<sup>2</sup> Quadrat in Wetland Planting Zone, April 2024**



**CR-4 Vegetation in Wetland Planting Zone, April 2024**



**CR-4 1m<sup>2</sup> Quadrat along East Shore in Wetland Planting Zone, April 2024**

## Section D. Invasive Plant Cover Photo-Documentation

---



CR1 Transect T-1, July 2024



CR1 Transect T-2, July 2024



**CR1 Transect T-3, July 2024**



**CR1 Transect T-4, July 2024**



**CR1 Transect T-5, July 2024**



**CR1 Transect T-6, July 2024**



**CR4 Transect T-1, July 2024**



**CR4 Transect T-2, July 2024**



**CR4 Transect T-3, July 2024**



**CR4 Transect T-4, July 2024**



**CR4 Transect T-5, July 2024**

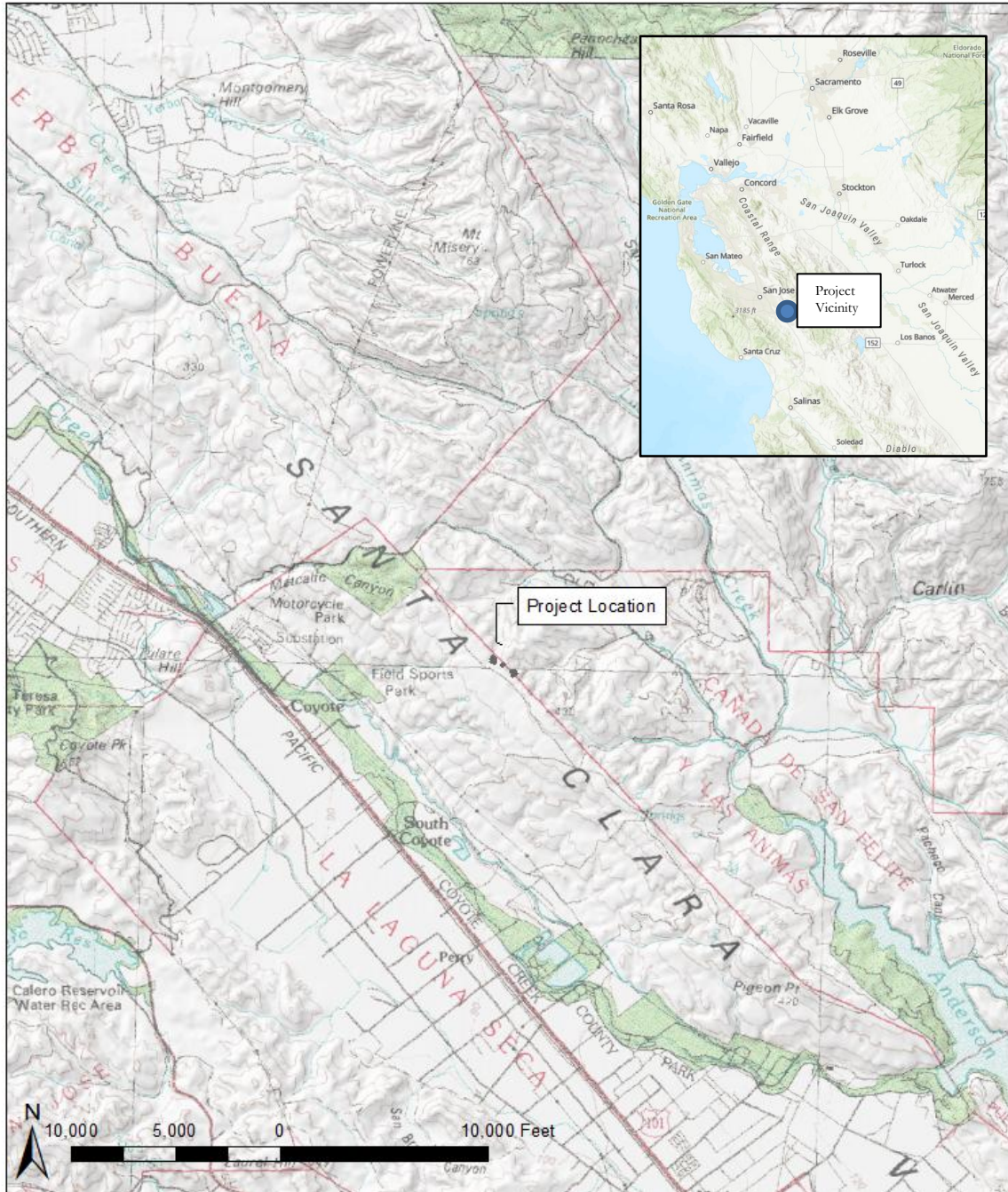


**CR4 Transect T-6, July 2024**

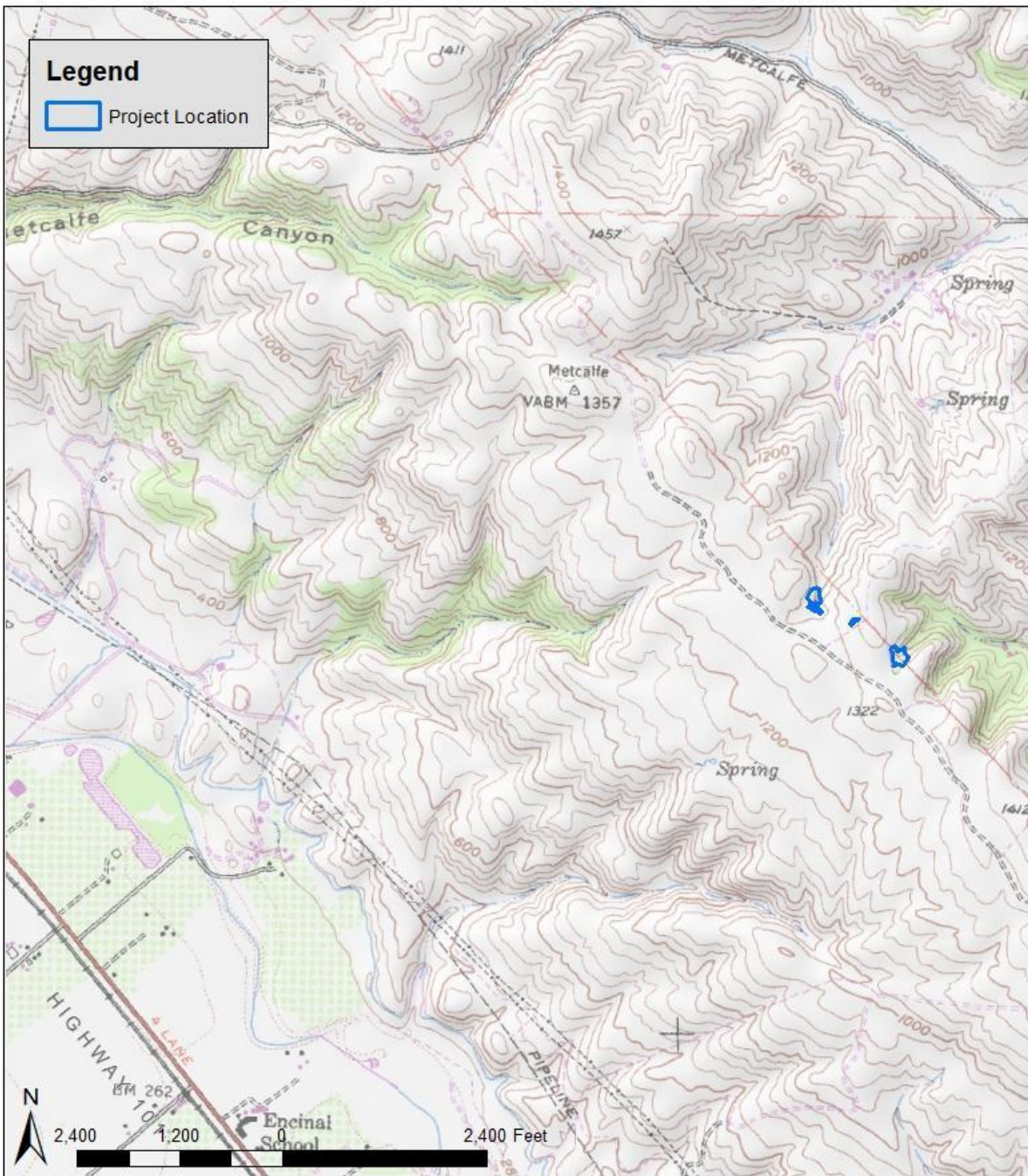
## Section E. Maps

---

Figures 1–4 are included below.



**Figure 1. Coyote Ridge CR1 and CR4 Sites Vicinity Map**  
**Coyote Ridge Ponds Restoration Project, Ponds CR1 and CR4**  
**Year 5 Monitoring Report**  
**January 2025**



**Figure 2. Coyote Ridge CR1 and CR4 Sites USGS Topographical Map  
Coyote Ridge Ponds Restoration Project, Ponds CR1 and CR4  
Year 5 Monitoring Report  
January 2025**





**Figure 3. Coyote Ridge CR1 Photo Monitoring Locations**  
 Coyote Ridge Ponds Restoration Project, Ponds CR1 and CR4  
 Year 5 Monitoring Report  
 January 2025





**Figure 4. Coyote Ridge CR4 Photo Monitoring Locations**  
 Coyote Ridge Ponds Restoration Project, Ponds CR1 and CR4  
 Year 5 Monitoring Report  
 January 2025

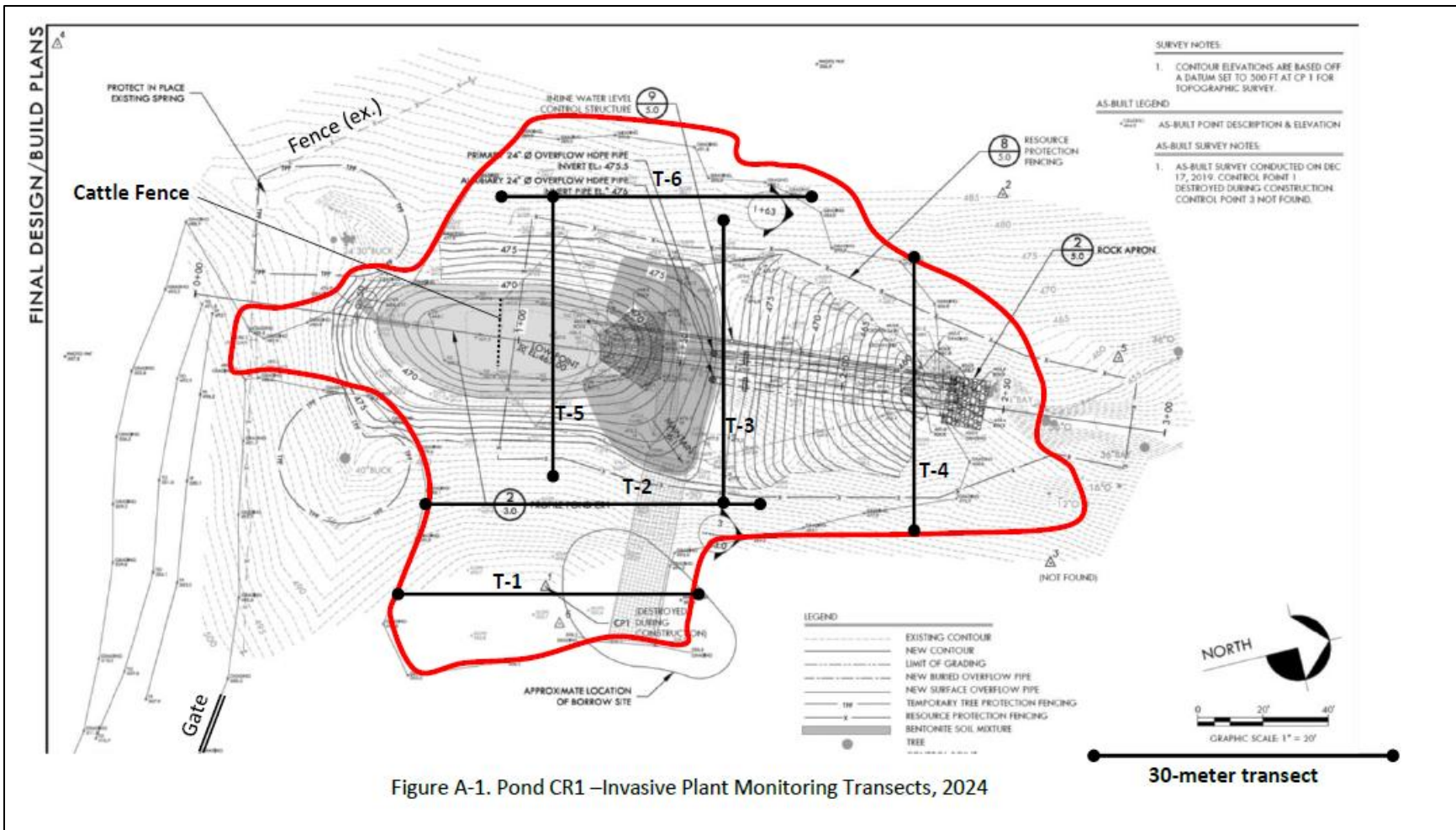
## Section F. References

---

- Biosearch Associates. 2008. Aquatic Amphibian Survey Results at Coyote Ridge. Prepared for the Santa Clara Valley Open Space Preserve.
- Swaim Biological Inc. 2018. Coyote Ridge Ponds Restoration Project (CR1 and CR4) Restoration and Monitoring Plan. Prepared for the Santa Clara Valley Habitat Agency. December 2018.
- Baldwin B. G., D. H. Goldman, D. J. Keil, R. Patterson, T. J. Rosatti, and D. H. Wilken, editors. 2012. The Jepson Manual: Vascular Plants of California. Second edition. University of California Press, Berkeley.
- Bonham, C. D. 1989. Measurements for Terrestrial Vegetation. John Wiley & Sons, New York, New York.
- [Cal-IPC] California Invasive Plant Council. 2017. California Invasive Plant Inventory Database. <<http://www.cal-ipc.org/paf>>. Accessed October 2020.
- ICF. 2012. Santa Clara Valley Habitat Plan. Prepared for County of Santa Clara, City of San Jose, City of Morgan Hill, City of Gilroy, Santa Clara Valley Water District, and Santa Clara Valley Transportation Authority.
- Lichvar, R. W., D. L. Banks, W. N. Kirchner, and N. C. Melvin. 2016. The National Wetland Plant List: Arid West 2016 Regional Wetland Plant List. April 28.
- Sherwood Design Engineers. 2019. Trip Report. November 8.
- [USACE] U.S. Army Corps of Engineers. 2014. South Pacific Division Mitigation Monitoring Report Form. September 26. <[www.spd.usace.army.mil/Portals/13/docs/regulatory/mitigation/MonRep.docx](http://www.spd.usace.army.mil/Portals/13/docs/regulatory/mitigation/MonRep.docx)>
- [USFWS] U.S. Fish and Wildlife Service. 2005. Revised Guidance on Site Assessments and Field Surveys for the California Red-Legged Frog. August.
- [USFWS and CDFW] U.S. Fish and Wildlife Service and California Department of Fish and Game. 2003. Interim Guidance on Conducting Site Assessments and Field Surveys for Determining Presence or a Negative Finding of the California Tiger Salamander.

# Appendix A. Wetland Vegetation and Invasive Plant Cover Monitoring Results

---



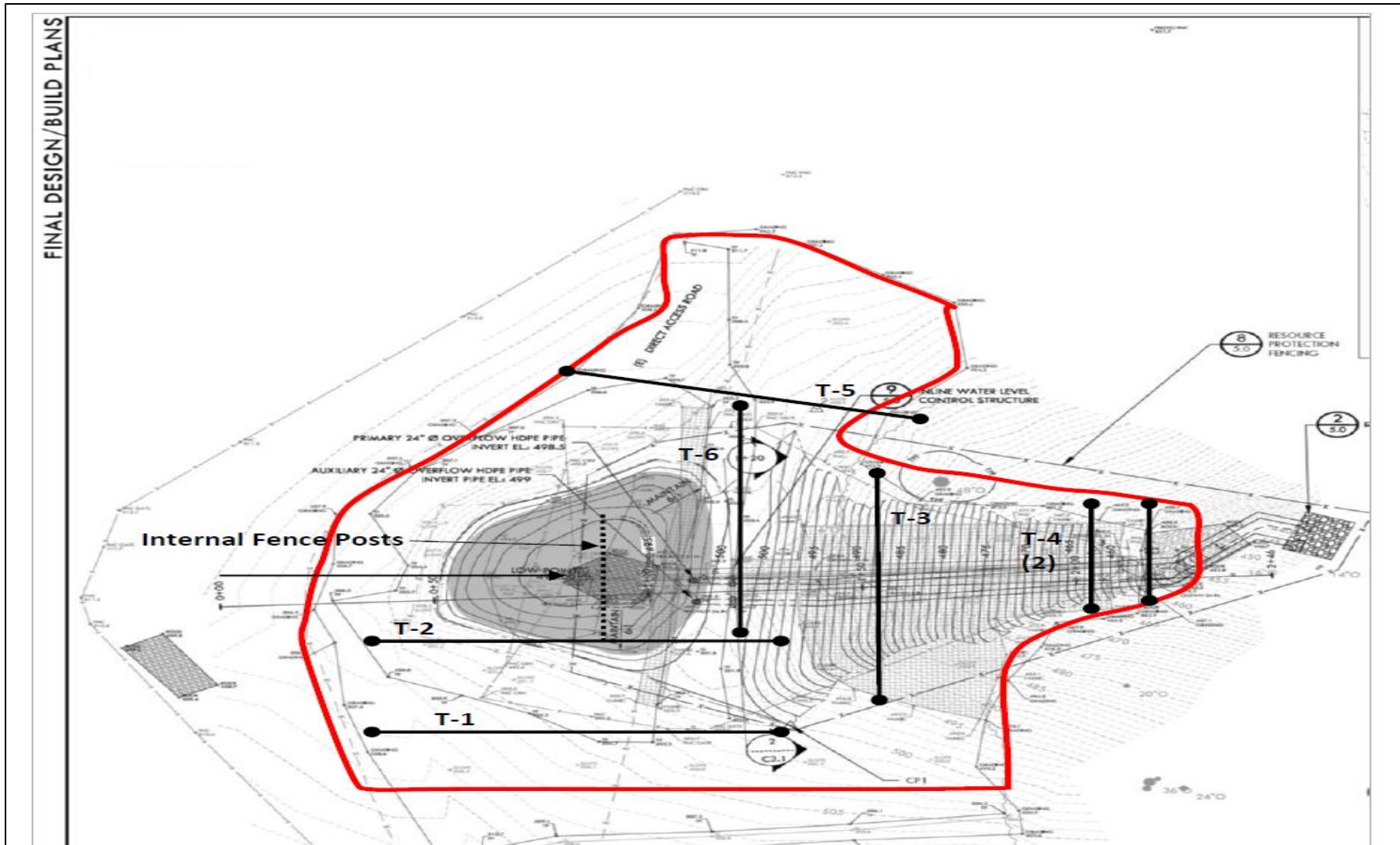


Figure A-2. Pond CR4-Invasive Plant Monitoring Transects, 2024.

## Wetland Vegetation and Invasive Plant Cover Monitoring Results

**Table A-1. Plant Species Observed within Wetland Monitoring Sites, Quadrat Sampling**

Scientific Name	Common Name	Wetland Indicator Status <sup>1</sup>	Average Percent Cover by Site, April 2024	
			CR1	CR4
<i>Polygonum aviculare</i>	Knotweed	FAC	10.7	-
<i>Rumex crispus</i>	Curly dock	FAC	2.3	20.6
<i>Xanthium strumarium</i>	Cocklebur	FAC	6.3	-
<i>Crypsis schoenoides</i>	Swamp prickleggrass	FACW	-	5.7
<i>Lactuca serriola</i>	Wild lettuce	FACU	-	2.2
<i>Eleocharis macrostachys</i>	Spikerush	OBL	-	14.5
<i>Leymus triticoides</i>	Creeping wild rye	FAC	-	19.8
<i>Persicaria amphibia</i>	Water smartweed	OBL	2.3	-
<i>Juncus effusus</i>	Bog Rush	FACW	0.6	0.9
<i>Festuca perennis</i>	Ryegrass	FAC	1.6	-
<i>Juncus xiphioides</i>	Iris-leaved rush	OBL	1.5	-
<i>Typha</i> sp.	Cattail	OBL	-	2.5
<i>Bromus hordeaceus</i>	Soft Chess	UPL	-	0.4
<i>Geranium dissectum</i>	Cut-leaved geranium	NI	-	3.1
<i>Juncus patens</i>	Spreading rush	FACW	-	1.8
<i>Grindelia</i> sp.	Gumplant	FACW	-	0.2
<i>Stachys rigida</i>	Hedgenettle	FACW	-	1.8
Bare	-	-	65	12

<sup>1</sup> Wetland vegetation cover is defined as the combined cover of native and nonnative species with a wetland indicator status of facultative (FAC), facultative wetland (FACW), or obligate (OBL) based on the Arid West Regional Wetland Plant List (Lichvar et al. 2020). Species with a facultative upland (FACU), upland (UPL), or no indicator (NI) wetland indicator status are not considered wetland species.

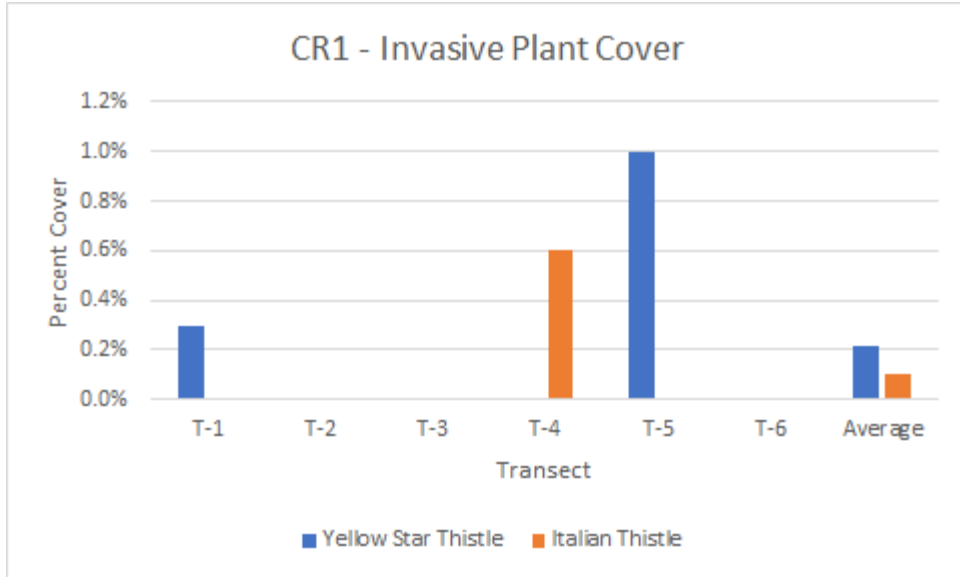


Figure A-5. CR1, Invasive Plant Cover, July 2024

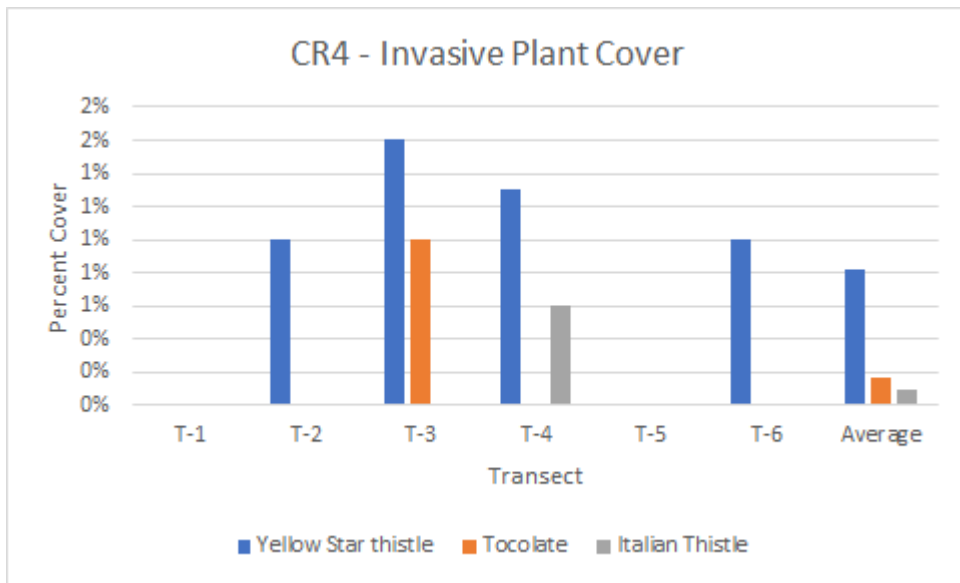
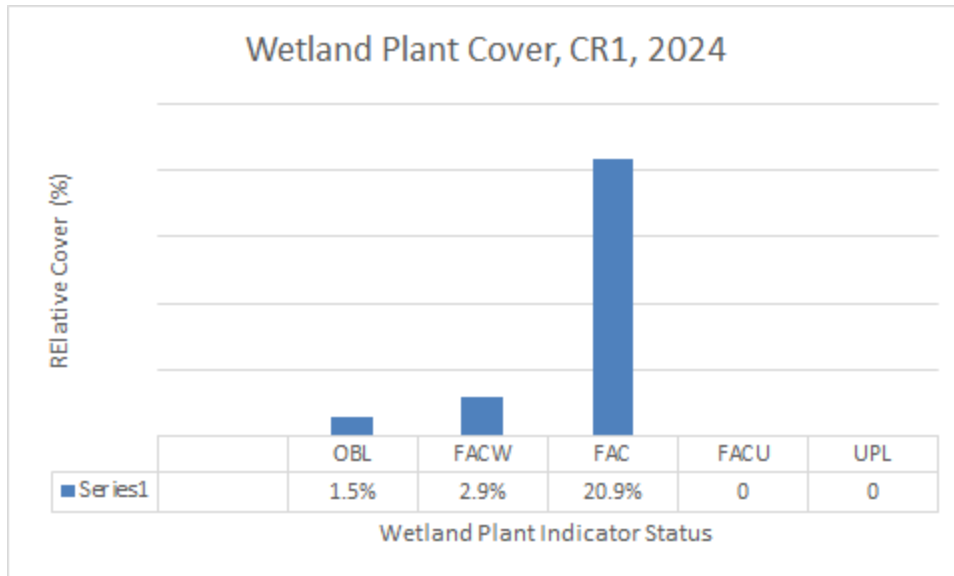
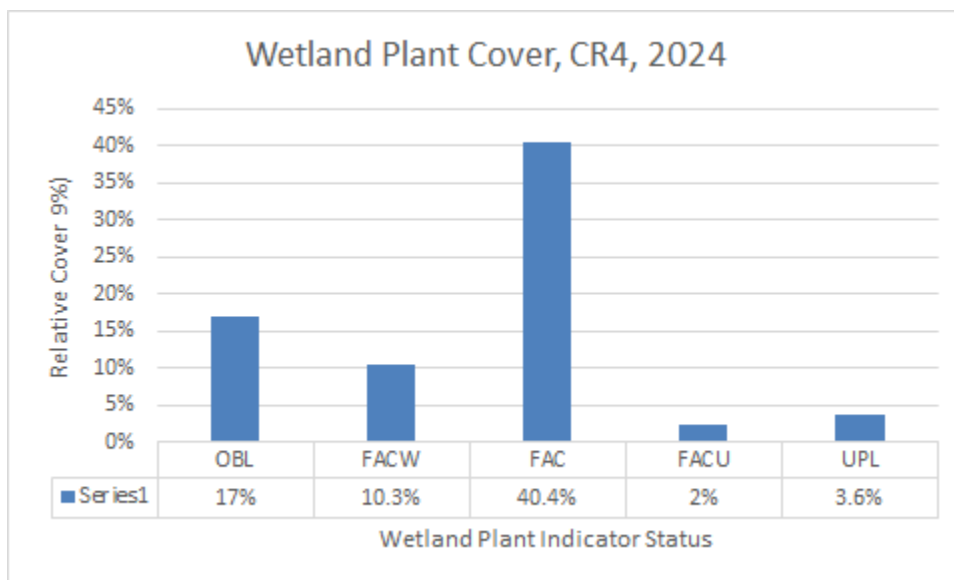


Figure A-6. CR4, Invasive Plant Cover, July 2024



**Figure A-7. CR1, Wetland Quadrats, Plant Cover, 2024**



**Figure A-8. CR4 Transects, Wetland Quadrats, Plant Cover 2024**

## Appendix B. Year 5 Precipitation Data

**Table B-2. Rain Guage Data (Provided by SCVHA)**

Date	Rainfall (in)	Precipitation to Date (in)
11/18/2023	0.9	0.9
12/7/2023	0.2	1.1
12/18/2023	0.8	1.9
12/19/2023	1.8	3.7
12/31/2023	0.85	4.55
12/28/2023	0.2	4.75
12/30/2023	1.05	5.8
1/3/2024	0.6	6.4
1/7/2024	0.25	6.65
1/11/2024	0.45	7.1
1/14/2024	0.5	7.6
1/17/2024	0.15	7.75
1/21/2024	0.55	8.3
1/23/2024	1.6	9.9
1/25/2024	0.65	10.55
2/2/2024	1.6	12.15
2/5/2024	3.4	15.55
2/8/2024	0.9	16.45
2/15/2024	0.25	16.7
2/18/2024	0.3	17

2/20/2024	0.75	17.75
2/21/2024	0.35	18.1
3/2/2024	0.8	18.9
3/4/2024	0.4	19.3
3/7/2024	0.3	19.6
3/25/2024	1	20.6
3/28/2024	0.1	20.7
3/30/2024	0.9	21.6
4/5/2024	0.95	25.55
4/13/2024	0.75	23.3
5/5/2024	0.65	23.95

## Appendix C. Infrastructure Monitoring Reports and Data

---

# Coyote Ridge Property Stock Pond Habitat Restoration

Prepared for Camara Environmental

By David Sands, Go Native, Inc.

Inspection date: April 29, 2024 12:30 pm

---

## Metcalf Road Entry gate to Staging Area

The main gate and the next cattle gate were intact and operational. The entry road was eroded in the usual places. No wildlife observed.



## CR01



- The cattle fence and gate are intact.
- Perimeter pond exclusion fences and gates – fences and gates intact, no obvious incursion by the cattle. Grazing evident outside the perimeter fence.
- Overflow pipes and debris guards – intact
- Berm conditions and integrity – good vegetation growth, no evidence of erosion
- Side slopes in and outside the perimeter fence – good vegetation growth, no evidence of erosion
- Water level and staff gauge – staff gauge intact, hard to read, less than one foot water
- Observations, comments, and recommendations – No recommendations

## CR04



- Cattle fence and gates intact.
  - Perimeter pond exclusion fences and gates - perimeter fences intact, no obvious incursion by the cattle. Grazing evident outside the perimeter fence.
  - Overflow pipes and debris guards - intact
  - Berm conditions and integrity - good vegetation growth, no evidence of erosion
  - Side slopes in and outside the perimeter fence - good vegetation growth, no evidence of erosion
  - Water level and staff gauge - staff gauge intact, pond is full. 6' foot.
  - Good vegetation coverage
- Observations, comments, and recommendations – everything looked good, no observable issues. No recommendations.



## Appendix D. As-Built Survey

---

Not included here, provided in Year 1 report.